

2 Dalglish Road  
Jameson Manor  
Jameson Manor  
Ponteland  
NE200FH

Price  
£575,000

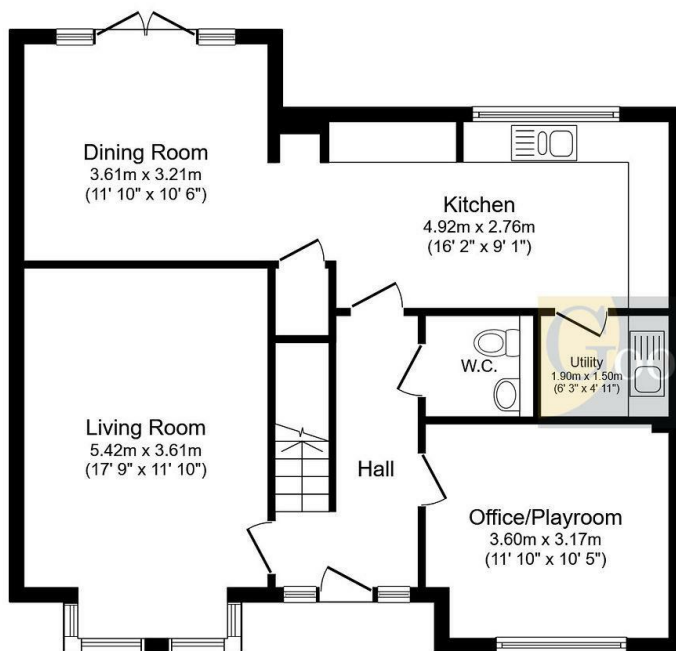


2 Dalglish Road Jameson  
Manor  
Jameson Manor  
Ponteland  
NE200FH

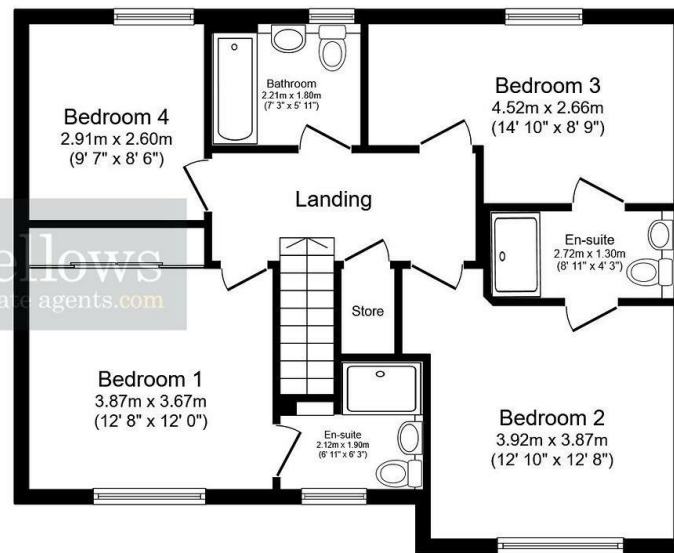
- 4 Bedrooms
- Living Room
- Open plan Kitchen/Dining/Family Room
- Shared En-suite
- Utility & Cloaks WC
- Superbly Presented
- Dining Room
- Master En-suite
- Bathroom
- Detached Garage







**Ground Floor**  
Floor area 73.8 sq.m. (794 sq.ft.)



**First Floor**  
Floor area 68.2 sq.m. (734 sq.ft.)

**Total floor area: 142.0 sq.m. (1,528 sq.ft.)**

This floor plan is for illustrative purposes only. It is not drawn to scale. Any measurements, floor areas (including any total floor area), openings and orientations are approximate. No details are guaranteed, they cannot be relied upon for any purpose and do not form any part of any agreement. No liability is taken for any error, omission or misstatement. A party must rely upon its own inspection(s).



**EPC Rating: B**  
**Council Tax Band: F**

Whilst every care has been taken to prepare these particulars, they are for guidance purposes only. All measurements are approximate and whilst every care has been taken to ensure their accuracy, they should not be relied upon and potential buyers/tenants are advised to recheck the measurements. The agent has not tested any equipment, services, fixtures or fittings and makes no representation regarding their condition.

**CONTACT**

11 West Road, Ponteland,  
Northumberland, NE20 9SU

E: [ponteland@goodfellowsestateagents.com](mailto:ponteland@goodfellowsestateagents.com)  
T: 01661 829164

